

Vent Head



Description

Vent Heads are designed for use on vertical open-ended steam vent pipes. Ideal for use on condensate vessels, blowdown vessels, hot water storage tanks etc.

Their purpose is to remove entrained water from discharged steam. Therefore, discharging dry steam to the atmosphere.

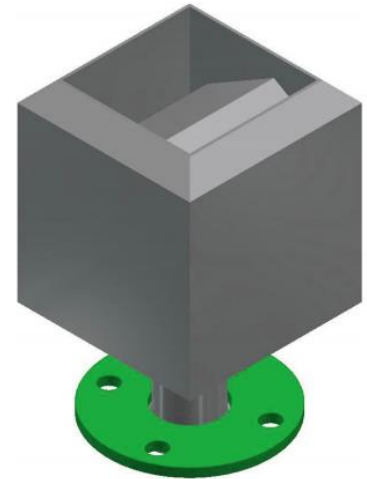
Warning

Vent heads must not be used for safety valve outlets.

Vent heads are selected to be the same nominal size as the vent pipe. A suitable thread sealant or full-face gasket should be used on the joint between the vent pipe and the vent head itself.

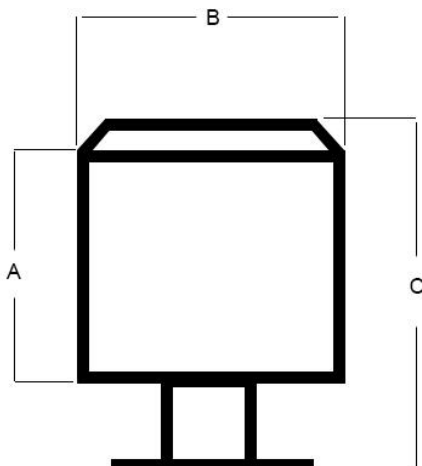
Materials

Body	Stainless Steel
Flange	Flanged EN 1092 PN16 Scotchkote 206N Green Fusion Bonded Epoxy Coated Mild Steel Backing Flange
Pipe	Metric Bore Welded Pipe
Collar	Metric Bore Pressed Collar
Finish	Metallic Heat Resistant Paint



Sizes & Dimensions

Size	Connection	A (mm)	B (mm)	C (mm)	Weight (KG)
DN50	Flanged EN 1092 PN16	175	175	295	4.9
DN65	Flanged EN 1092 PN16	200	200	320	6.4
DN80	Flanged EN 1092 PN16	225	225	345	7.8
DN100	Flanged EN 1092 PN16	250	250	370	9.5
DN150	Flanged EN 1092 PN16	350	350	480	17.8
DN200	Flanged EN 1092 PN16	400	400	530	24.0



If alternative inlet connections/ sizes are required, please contact us directly for a quotation. We are able to provide a wide range of sizes/ connections.

Tel | +44 (0)116 240 3430

Email | sales@flomar.co.uk

Web | www.flomar.co.uk